



www.vathin.com
marketing@vathin.com

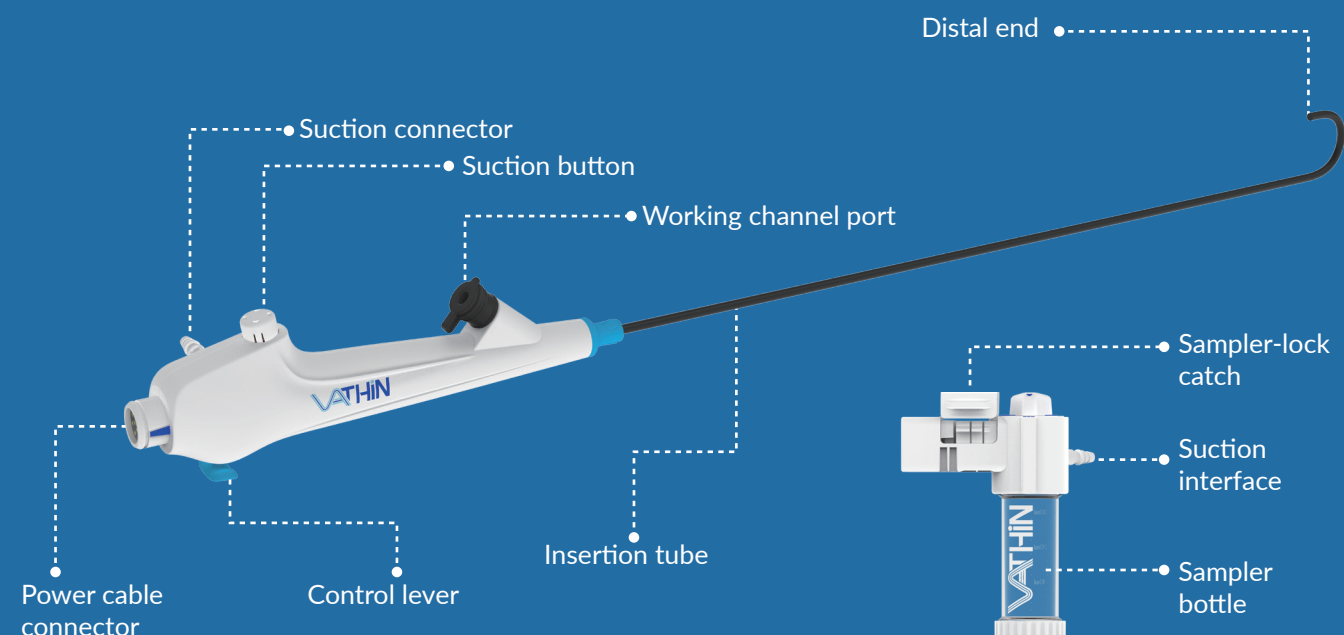
1st floor, Building 12 , No.9, West Chuanqi Road, Jiuhoa
Economic and Technological Development Zone, Xiangtan
411100, China



Single-use **Flexible Bronchoscope** EleBALScope Series

Dedicated BAL solution for ICU

Vathin EleBAL Scope series are specially designed for ICU and ER scenarios and target the clinical needs for safe sampling, ease-of-use and higher clinical performance.



Higher Level Suction Performance

90%
larger working channel
than conventional designs in
the same outer diameter.

Just like the Elephant's trunk, Vathin BALScope Series feature efficient suction and reach, with powerful aspiration and collection capability.

Product Features



Unique Large Channel Design

Larger channel, enhanced suction power and better clinical outcomes.



Upgraded Visualization

720x1080 camera lens & full HD monitor.



Available Sizes

4.5/5.0mm OD scopes and 50ml sampler.



Close-loop BAL Sampling System

Eliminate sample loss and contamination.



Eco-friendly Design

Re-usable power cable, designed with the environment in mind.



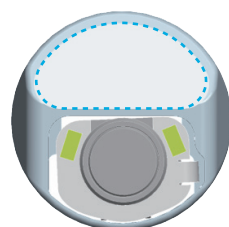
Single-use System

Single-use. Accessible. Sterile. No risk of cross-contamination.

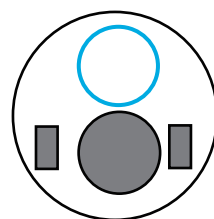
Optimize Your BAL Efficiency

Vathin EleBAL Scope series features an optimized large working channel that enhances suction power, accommodating to day-to-day demand for timeliness and clinical outcome.

Vathin EleBAL Scope Working Channel Design



Conventional design



| | | | |
|----------------------|----------------------|----------------------|----------------------|
| OD | 4.5mm | 5.0mm | 5.8mm |
| Working channel | 8.6 Fr | 10.2 Fr | 8.6 Fr |
| Working channel area | 4.19 mm ² | 6.26 mm ² | 5.31 mm ² |

LARGER working channel, **SMALLER** outer-diameter
ENHANCED patient treatment experience

✓ Options for 8.6/10.2Fr working channel

Lung infections are common in ICU patients, especially those on mechanical ventilation or with compromised immune systems. **Large-channel suction** is critical for clearing thick secretions (mucus or phlegm) that can block airways. Effective management with suctioning and BAL, alongside other treatments, can improve the patient's recovery prospects.

✓ Options for 4.5/5.0mm OD with enhanced suction

Selecting the thinnest possible bronchoscope is crucial for minimizing airway resistance, especially in ICU patients who require long-term endotracheal tube placement. A thinner bronchoscope with equivalent suction power can efficiently perform BAL procedures while leaving more space within the tube, maintaining better airflow.

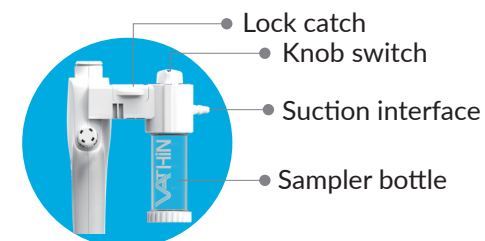
» Clinical Benefits «

Special Channel Design

- Beneficial in handling difficult secretion cases.
- Improves specimens yield which is crucial for diagnosing various lung conditions, such as infections, interstitial lung diseases, and malignancies.
- Significantly enhances BAL efficiency and the overall workflow. Reduces loss time.
- Offers better options for BALscope OD and thus enhances patients' experiences.

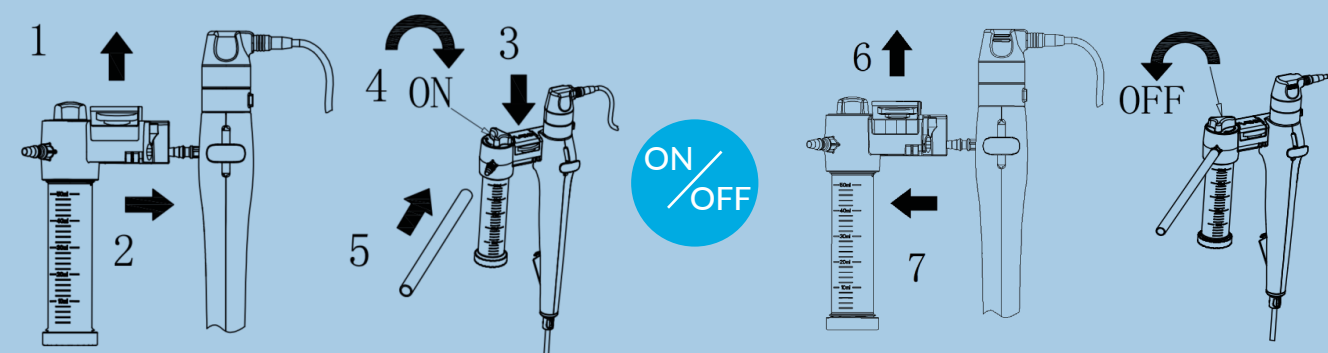
Secure Your Sampling Procedure

Vathin EleBAL Scope series integrates a closed-loop sampler that essentially changes the sampling workflow, from sample exposure steps to fully sealed sampling procedure.



In a fully closed-loop mode, Suction & Collection can be simply alternated by the Knob Switch on the sampler.

Streamlined Installation and Sampling by Vathin BAL Sampler



» Clinical Benefits «

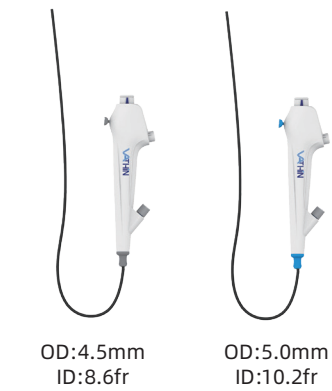
Close-loop Sampler

- Eliminates sample loss and contamination
- Improves sample quality and yield
- Reduces staff exposure to specimen
- Single-use sampler set. Ready to go when it's needed



Specification

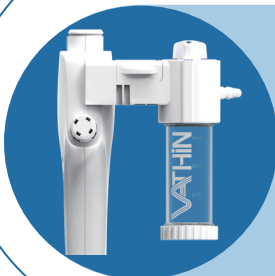
EleBAL Scope Series



BAL Small BAL Normal

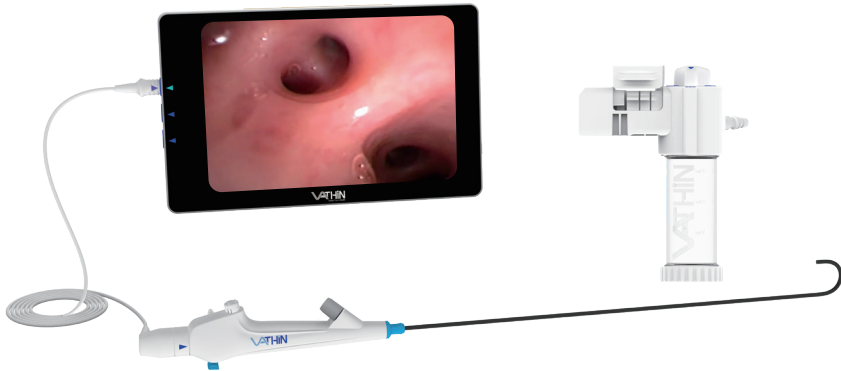
| Name | BAL Small | BAL Normal |
|-------------------|--------------|------------|
| Model | BC-E1C10 | BC-E1E10 |
| Insertion Tube OD | 4.5 mm | 5.0 mm |
| Working channel | 8.6 Fr | 10.2 Fr |
| Bending Section | U180°/D150° | |
| Working Length | 600mm | |
| Field of view | 110°±15% | |
| Resolution | 720x1080 plx | |
| ETT compatibility | ≥5.5mm | ≥6.0mm |
| DLT compatibility | ≥35Fr | ≥40Fr |

BAL Sampler



| Model | S-30mL | S-50mL |
|--------|--------|--------|
| Volume | 30mL | 50mL |

Display Unit



Vathin BALScope series are compatible with Vathin DVM-D display unit with full HD imaging.

HD Imaging System



Digital scope connector
1280x720,1920x1080p30

Analog scope connector
400x400,200x200;720x720

| Model | DVM-D |
|--------------------|--------------------------|
| Display resolution | 1920*1080 (full HD 60Hz) |
| Display Type | 15.6" FHD Color TFT-LCD |
| Dimension WxHxT | 382 mmx 238mm x 44.5mm |
| Weight | 3 kg |
| Storage Capacity | 64GB |

- ✓ High definition imaging system.
- ✓ Large screen for easier visualization.
- ✓ Simultaneous Dual-Scope Display option.
- ✓ Ideal clinical observation.

